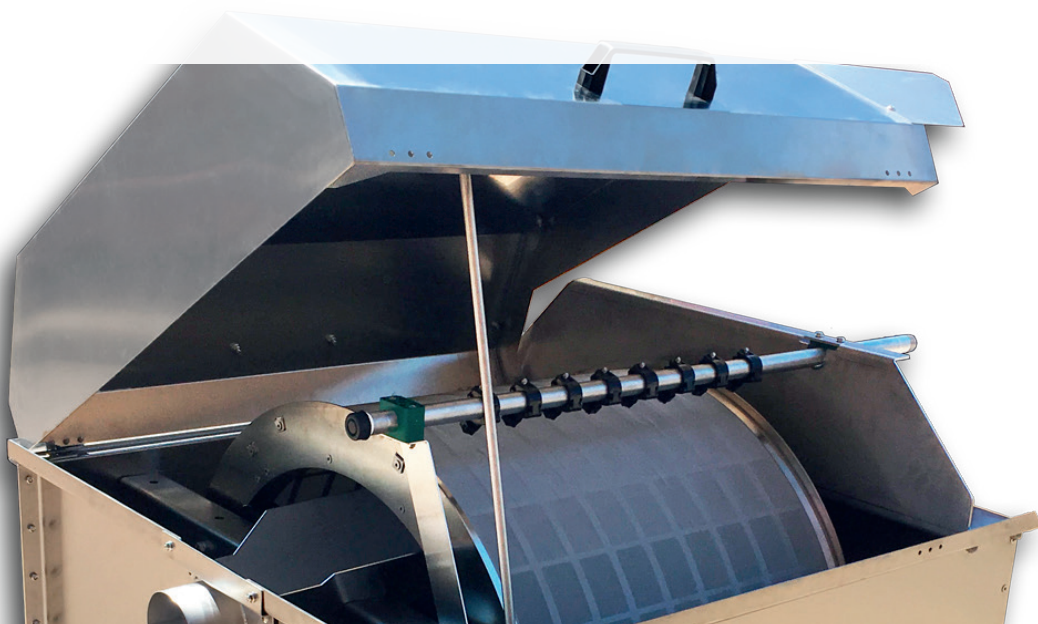


SENECT

Aquaculture Drum Filter



Filtration without compromise.

- Robust stainless steel drum filters - tank and open channel versions
- For flow rates of 5 up to 300 l / s
- Intelligent WLAN control system



FILTER



WATER
LEVEL
CONTROL



SENSOR
CONTROL



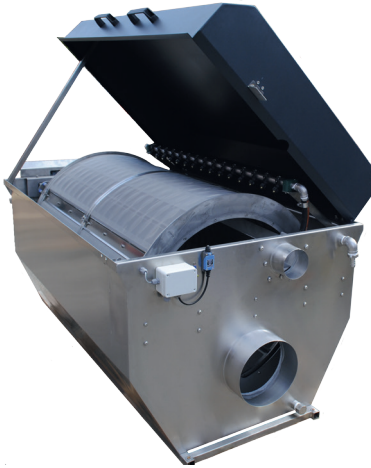
TIME
CONTROL



WLAN

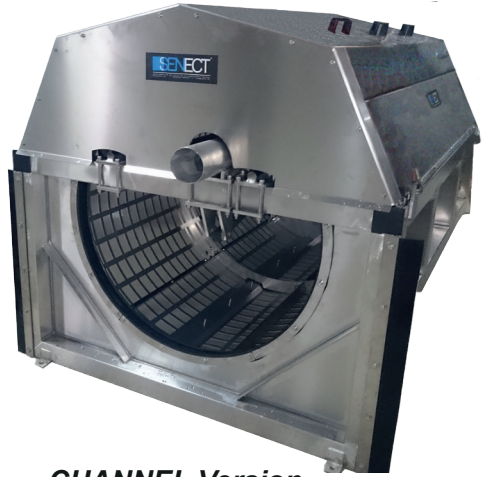
SENECT

Aquaculture Drum Filter



TANK Version

to connect the filter directly to pipes.



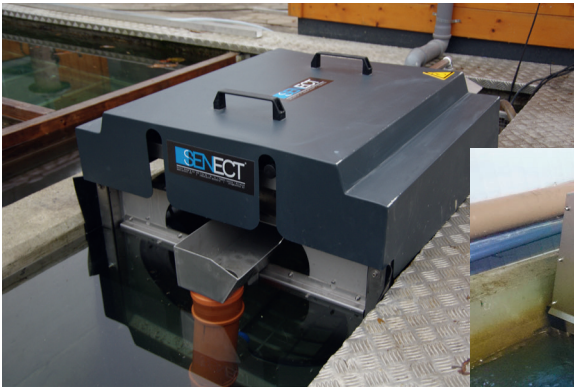
CHANNEL Version

for the installation in raceways or open channels.

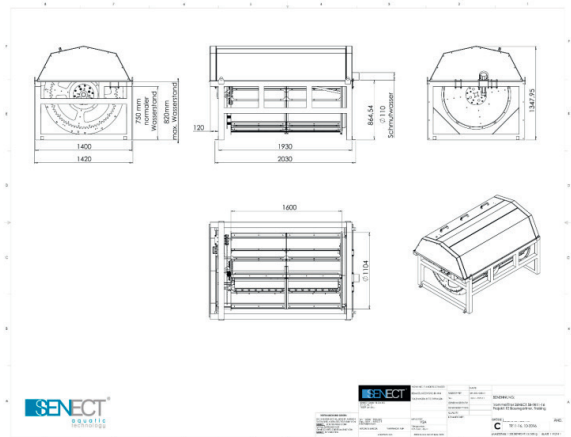
- + Stainless steel (1.4301, 1.4401 or special coating for seawater applications)
- + Tank (pipe connections) or channel version
- + Flow rates of 5 up to 300 l / s (18 - 1000 m³ / h) at 20 mg TSS / l
- + Variable mesh size (standard 60 µm)
- + Robust cogwheel drive (no direct drive, no chain drive)
- + Industrial gear-engine (variable frequency drive-controlled)
- + Dry-placed or submersed high-pressure spray pumps
- + Intelligent WLAN control unit with hydrostatic pressure sensors
- + Easy plug-and-play installation
- + Power supply 230 V or 400 V AC
- + Alarm and monitoring via PC or smartphone

CUSTOMIZED DRUM FILTER

For the perfect fit



SENECT plans your filter for retrofit in existing systems or for the installation in new farms. We work with modern 3d CAD tools to visualize your filter project - to ensure an optimal fit. Additionally, we provide special start-up service during commissioning.



Customized drum filters - How it works

Since customized filters are designed and constructed individually according specifically to the application the process follows these five steps:

1. Send us information

- Type of application and medium (e.g. freshwater aquaculture)
- Desired flow rate (e.g. 50 m³ / h)
- Filter type (tank or channel version)
- Installation site sketch (e. g. width, height)

2. Get the offer

- Check the dimensions and quantities
- If everthing is correct, place the order

3. Receive the technical sketches

- Proof-read the sketch
- If everthing is correct, confirm the sketch

4. The filter will be produced

- The filter will be produced individually for you
- You will be notified, when the filter is shipped

5. Install the filter

- Install the filter at site
- Plug in the controller and switch it on

MORE QUESTIONS?

Contact us via info@senect.de